

Post 16 Options

What to expect going forwards

What are their Options?

- Raising of the Participation Age

So, what does this mean for them?

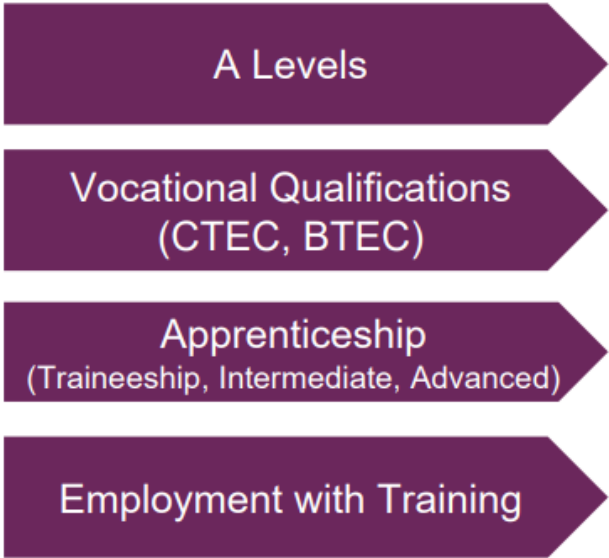
- stay in full-time education - for example at school, sixth form college, further education college or University Technical College (UTC)
- start an apprenticeship or traineeship
- spend 20 hours or more a week working or volunteering while also doing part-time education or training
- Better chances of a fulfilling career.



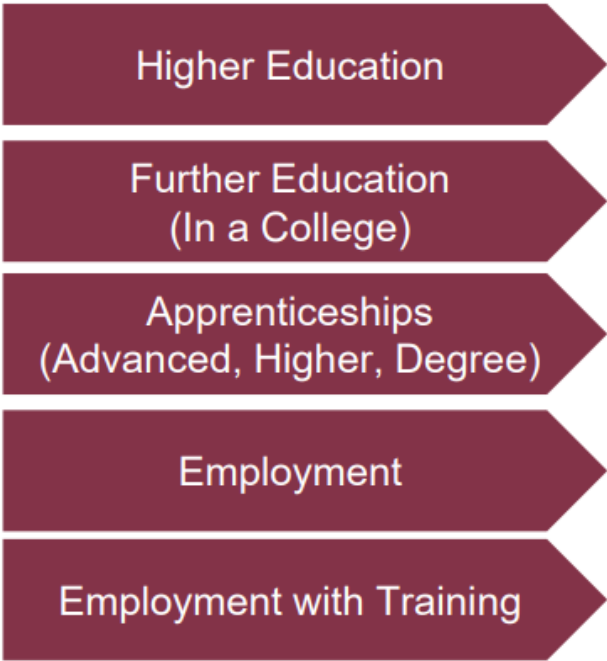
Year 10 - 11



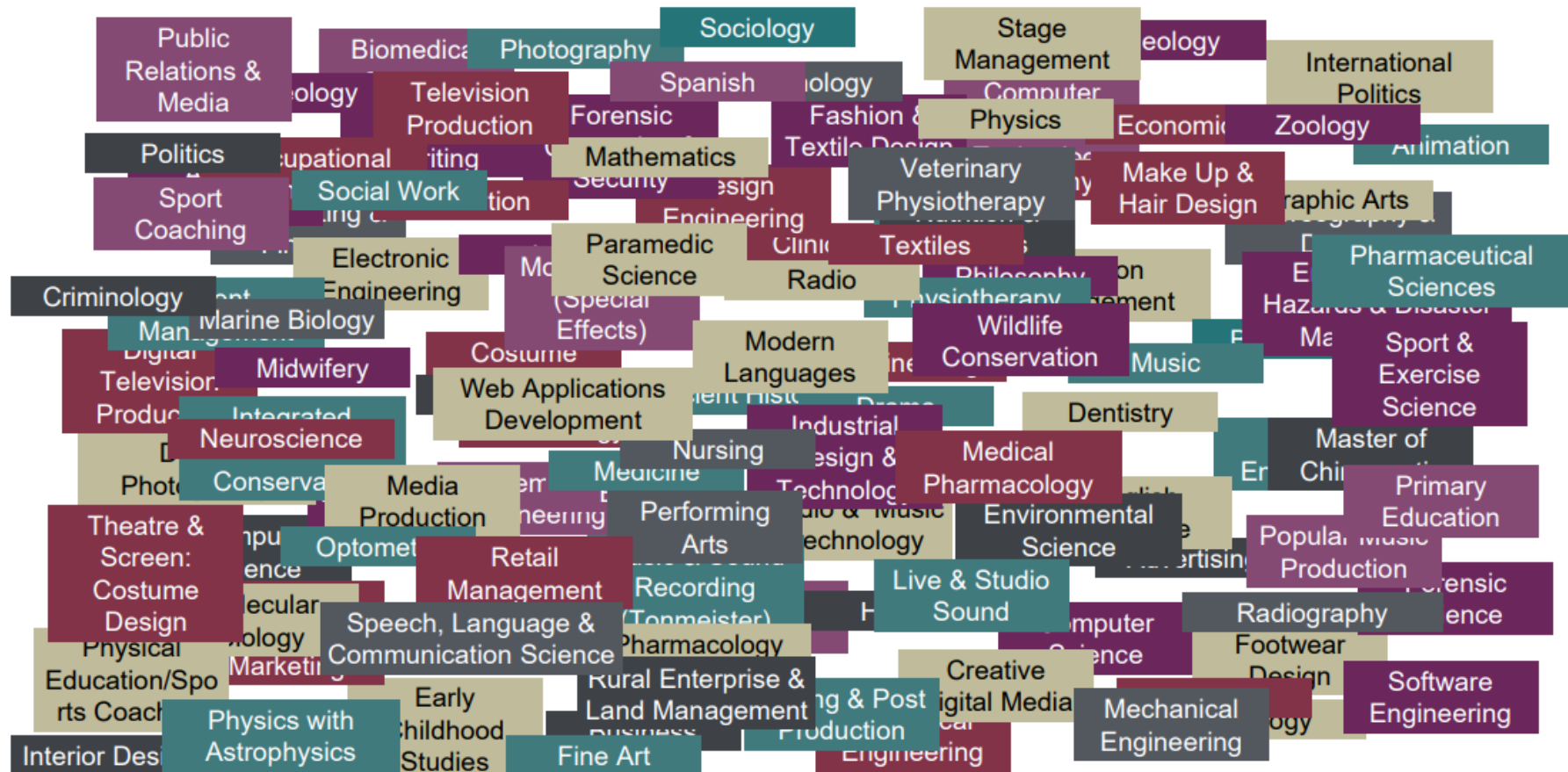
Post – 16 Options



Post – 18 Options



What's Next? (Post-16 to Post-18)



Where?

- School Sixth Form.
- Further Education College.
- With an Employer and a Training Provider.



When to apply?

- Colleges open applications from NOW
- Most Sixth Forms from November
- Apprenticeship applications which can be advertised from now, but usually much closer to start date i.e. February onwards
- Most applications are now online and simple to do, requiring you to click and link and create an account.
- ALWAYS have a back up plan/more than one option





Some of the most popular options explained

APPRENTICESHIPS

- Popular and increasing in number.
- Competitive, no longer what you do if you don't do well in school!
- Find and apply like a normal job.
- Grade 4 or higher in English and maths.
- Paid time off for study and holiday.



	Level	Equivalent education level
Intermediate	2	GCSE
Advanced	3	A level
Higher	4,5,6 and 7	Foundation degree and above
Degree	6 and 7	Bachelor's or master's degree

Success for life

T-LEVELS

- New technical qualification.
- Equivalent to 3 x A-levels.
- Two year course.
- Work Placement is 20% of your qualification.
- Entry requirements vary.



Success for life

T-LEVELS

AVAILABLE NOW

AGRICULTURE, ENVIRONMENTAL AND ANIMAL CARE

- Agriculture, Land Management and Production

BUSINESS AND ADMINISTRATION

- Management and Administration

CONSTRUCTION

- Building Services Engineering for Construction
- Design, Surveying and Planning for Construction
- Onsite Construction

DIGITAL

- Digital Business Services
- Digital Production, Design and Development
- Digital Support Services

ENGINEERING AND MANUFACTURING

- Design and Development for Engineering and Manufacturing
- Maintenance, Installation and Repair for Engineering and Manufacturing
- Engineering, Manufacturing, Processing and Control

EDUCATION AND EARLY YEARS

- Education and Early Years

HEALTH AND SCIENCE

- Health
- Healthcare Science
- Science

LEGAL, FINANCE AND ACCOUNTING

- Accounting
- Finance
- Legal Services

SEPTEMBER 2024 ONWARDS

- Animal Care and Management
- Catering (start date to be confirmed)
- Craft and Design
- Hairdressing, Barbering and Beauty Therapy
- Media, Broadcast and Production

Success for life

VOCATIONAL COURSES

- Specialist qualifications, for example BTECs also known as Applied qualifications.
- Combine practical learning with subject specific and theory content.
- The GCSE grades needed will depend on the entry level of the course
- Insight into an industry and a vocational alternative to A-Levels.
- Progress to a higher level - such as an apprenticeship or higher level course.



Success for life

Extended Certificate or Diploma?

Extended Certificate

- AKA Applied A-level.
- Equivalent to one A-level but usually 50/50 coursework and exam
- Combine with A-levels
- Can usually only do one plus two A-levels if want to go on to university (but not always)
- Graded merit, distinction etc.

Extended Diploma.

- Vocational course that is full-time for two years i.e. you **ONLY** take this one subject.

A-LEVELS

- Most students take 3 subjects (but some can do more).
- Exams after 2 years.
- Minimum Grades needed.
- Choose a range of subjects



Success for life

What do we do to assist your child?

- Careers advisor group and 1:1 sessions before November.
- Colleges and other providers have visited to introduce their offer.
- Sixth form open evening.
- Insight days, open events on Satchel One noticeboard.
- Information on Careers section of website
- Unifrog career platform
- Careers Drop In after school every Monday for ad hoc advice or help with applications
- Back Up plan.



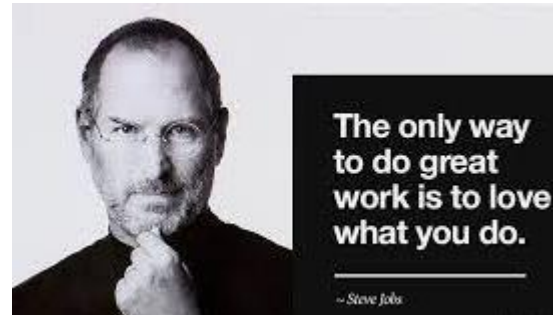
The guidance session

- Appointment notification by Satchel One.
- Confidentiality, data protection and impartiality.
- At the appointment we will discuss their ideas and plans.
- Action Plan – it is up to them to take this forward.



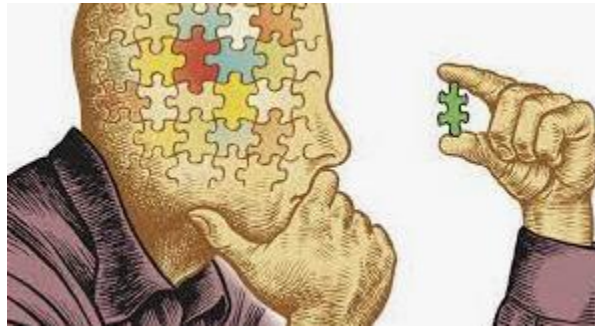
What else do you need to know?

- Grade 4 or higher in English and maths
- Do RESEARCH options.
- Do go VISIT colleges and sixth forms.
- Do not choose for the wrong reasons.
- Courses are going to be more difficult than they are at GCSE. Embrace the challenge.



What else do you need to think about?

- Entry requirements for certain careers or further study.
- Complementary subjects or subjects with overlapping content.
- No idea? What do you NOT want to do? We can work from there.



Any Questions?