



Year 11 Launch Evening
8 September 2025

Structure of the Evening



- Introductions
- Key dates
- Year 11 Handbook
- Key information
- Prom 2026
- Successful revision
- Post 16 options



Visualise August 2026

We want students to have the foundations for a rich and fulfilling life.

We will support them all the way, including providing:

1. exceptional classroom teachers
2. additional revision sessions
3. targeted support
4. support with next steps
5. support from the House Team
6. celebration of their achievements.



Visualise August 2026

If things did not go as well as hoped last year, the good news is that they have a **fresh start** ahead of them – they have time to change!

If things did go well, keep it up, **do not get complacent** – keep doing the things that made it a success.



Key Staff



Mrs Davis
Assistant
Headteacher:
Director of KS4



Mr Beard
Head of Year 11/
Head of Langley
House



Mrs Jackson
Transition and
Careers Leader



Mr Peacock
Assistant
Headteacher:
Head of Sixth
Form

Key Staff



Mrs Hill
Langley and Norcot
Welfare Manager



Mrs Wilcox
Welfare Manager
responsible for PP
and LAC students



Mrs Cook
Kentwood and Sulham
Welfare Manager

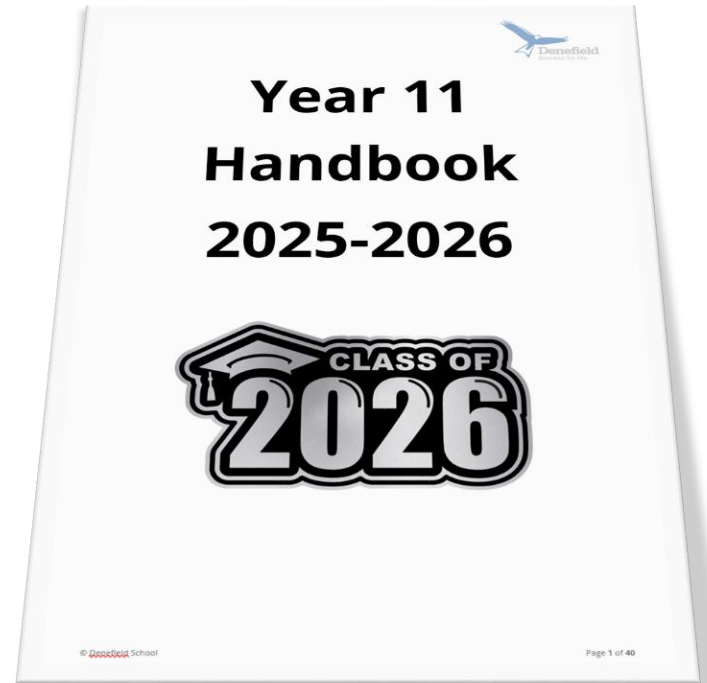
Key Staff



Year 11 Handbook

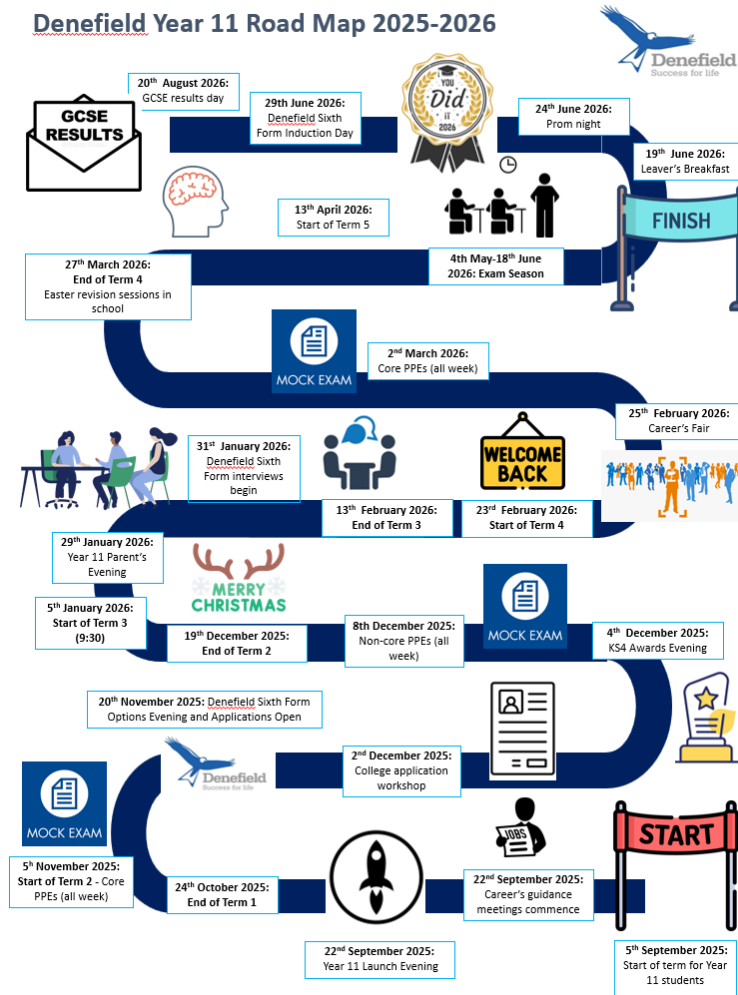
Contains **everything you need** for Year 11 including:

- key dates
- key information
- Prom information
- effective revision strategies
- key exam information
- JCQ regulations
- Post 16 options.



Key Dates

Denefield Year 11 Road Map 2025-2026



Key Dates 2025



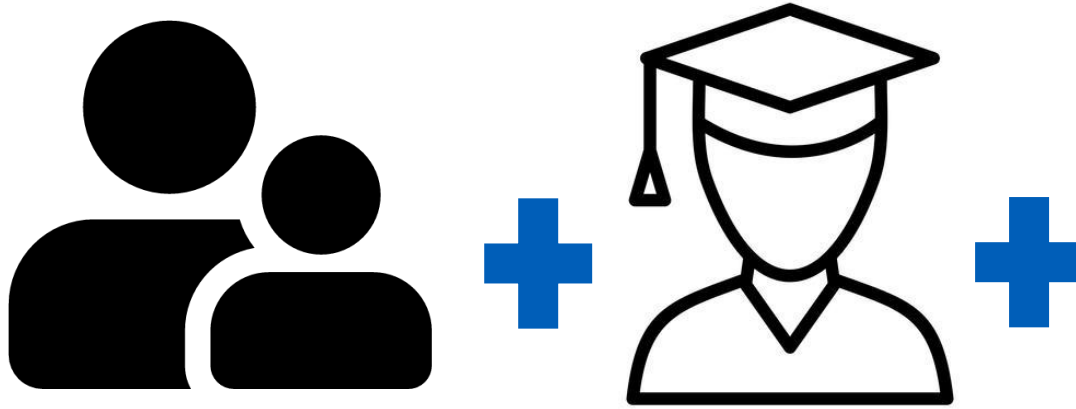
Date	Event
5 September 2025	Term 1 starts for Year 11 students
8 September 2025	Year 11 launch evening for parents/carers
5 November 2025	Core PPEs – all week
20 November 2025	Denefield Sixth Form Open Evening
9 December 2025	Non-core PPEs – all week

Key Dates 2026



Date	Event
5 January 2026	BTEC exams – all week
29 January 2026	Year 11 Parent's Evening
2 March 2026	Core PPEs – all week
5 May 2026	GCSE exam season begins
18 June 2026	Year 11 Leavers' Breakfast
24 June 2026	Year 11 Prom

Our School Contract



Parents/Carers

Students



What you can do



School



What we can do

Attendance Matters

Regular attendance at school matters. Our expectation is that all students attend school **100% of the time**.

It is also vital for success and achievement later life that students get into **good habits** regarding attendance and punctuality.

Attendance matters and every school day counts



Attendance Matters

Regular attendance has a **direct link** to your GCSE grades.

At Denefield the difference between an attendance below and above 90% is **one grade**. This increases further for students whose attendance is above 95%.

Simply put – **the better their attendance, the better their grade!**



Punctuality

All lessons begin with a **silent and solo** activity – knowledge recall.

This means that the first minutes of a lesson are a crucial tool to revise key content.

Number of minutes late	Amount of revision lost
2 minutes per lesson	8 days
4 minutes per lesson	16 days



Homework

We believe that homework is vitally important. Students are expected to complete **all homework** that is set by their teachers.

Educational research shows that, for most students, homework really does improve academic performance.

For example, evidence suggests that students completing approximately two hours of homework each night are almost **10 times more likely to achieve** a minimum of five strong GCSE grades.



Behaviour and Culture



Large evidence base suggesting significant link between **strong behaviour culture and excellent academic results.**

Behaviour and Culture



Students

- **Work hard.**
- Self-disciplined.
- Listen to all advice.
- Work to deadlines.
- Complete all homework.
- Act on feedback.
- Attend revision/support sessions.

Parents/Carers

- Ensure **excellent attendance** and **punctuality**.
- **Assist with homework** – all fact based knowledge and quizzing.
- Support the school.
- Attend meetings.

School

- High expectations of **conduct, attitude and uniform**.
- Disruption free guarantee.
- Provide knowledge, advice and skills on how to achieve.

Prom – 24 June 2026

- Trunkwell House.
- 7.00pm – 11.00pm.
- Tickets approximately £50.
- Opportunities to win a free ticket throughout the year!
- Invitation dependent on conduct and attendance throughout the year.



Prom Pledge

As a student I pledge to...

- Be on time to school and to lessons every day – I understand that I must have a minimum of 96% attendance over the course of year 11.
- Wear the correct uniform.
- Follow all staff instructions.
- Actively engage in my learning.
- Complete all my homework.
- Attend all detentions.
- Interact positively with staff and peers.
- Not engage in any form of unkindness or bullying (this includes online).
- Not behave in a way that brings the school into disrepute.
- Not engage in any form of physical aggression with another member of the school community – this includes punching, kicking, pushing or so called ‘play fighting’.
- Not engage in any form of discrimination toward any other members of the school community – this includes any forms of racism, sexism, misogyny, homophobia or transphobia.
- Not bring in or be in possession of any items the school deemed to be prohibited – this includes vapes, any form of drug or smoking paraphernalia, weapons or pornography.

Not meeting prom pledge



Identified Concern	Actions
Attendance falls significantly below 96% or the student accrues a significant number of behaviour points,	Parents and student to be invited in for meeting and student to be placed on prom contract which will be regularly reviewed and monitored.
Student is externally suspended	Student will immediately be placed on a final prom contract and place at prom will be placed at significant risk.
Student receives multiple internal suspensions	Student will immediately be placed on a final prom contract and place at prom will be placed at significant risk.

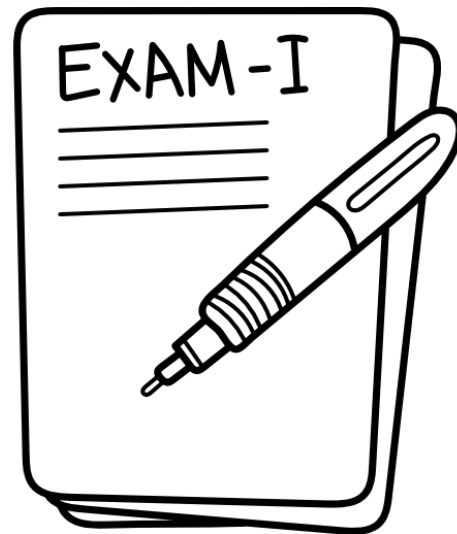
GCSE Exams

Are

- challenging
- somewhat stressful
- an opportunity for you to show what you know and how good you are.

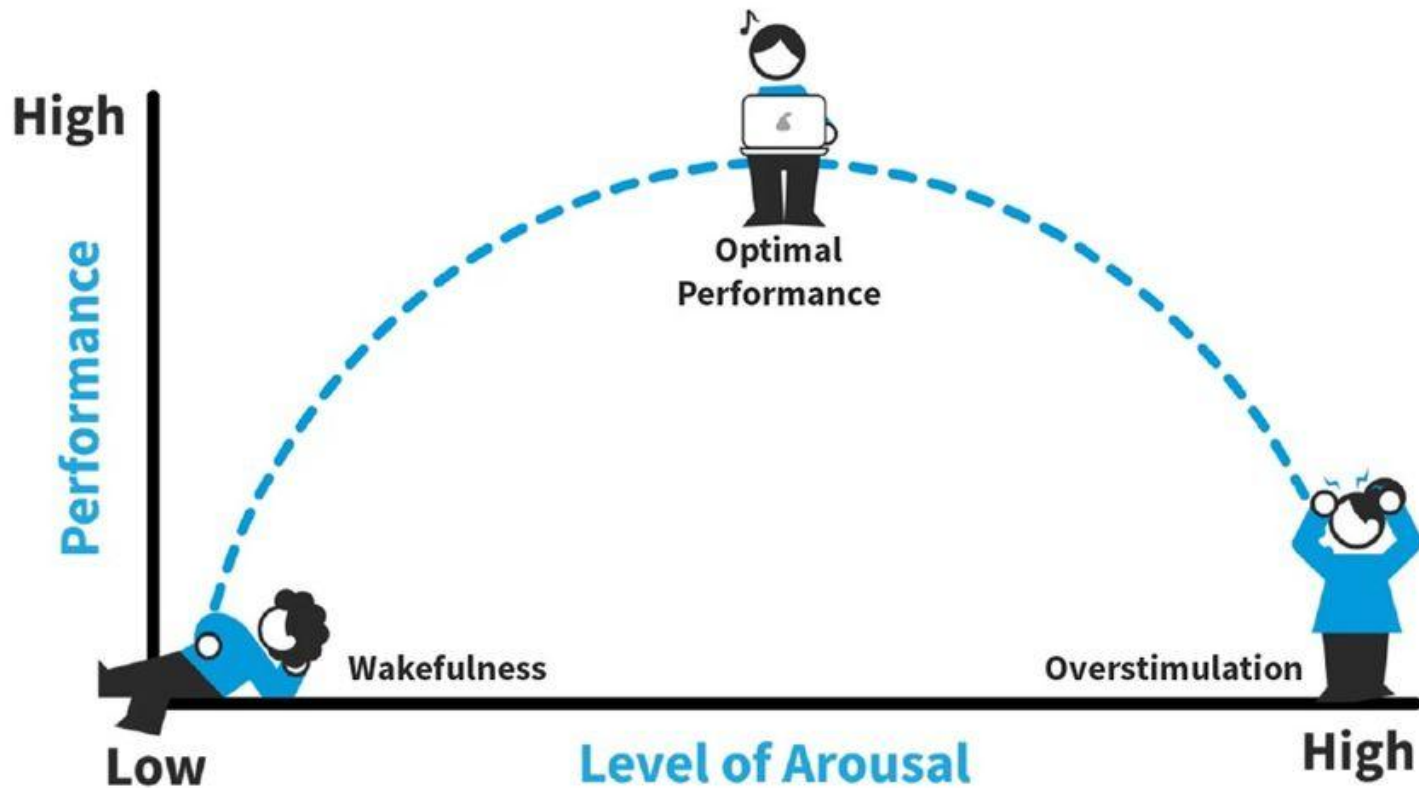
Are not

- impossible



We are here to **support**, show them **how** and **guide them through**.

Yerkes-Dodson Curve





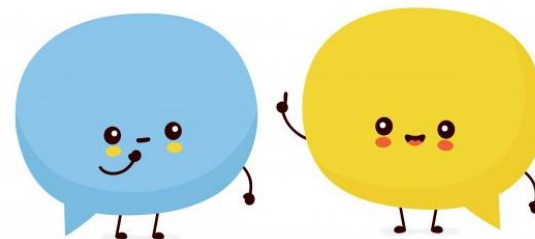
Where to find help and support



If you are worried about yourself or someone else, or if you want to report something that doesn't feel right or safe, there is always help for you.

You can:

- talk to your tutor or a trusted teacher
- talk to a welfare manager
- talk to your parent or carer – they can contact school on your behalf
- email listening@denefield.org.uk
- post a note in the listening box at student reception
- call Childline 0800 1111



Our key safeguarding staff are:



Mrs Williams (DSL)



Mrs Hill



Mrs Holley

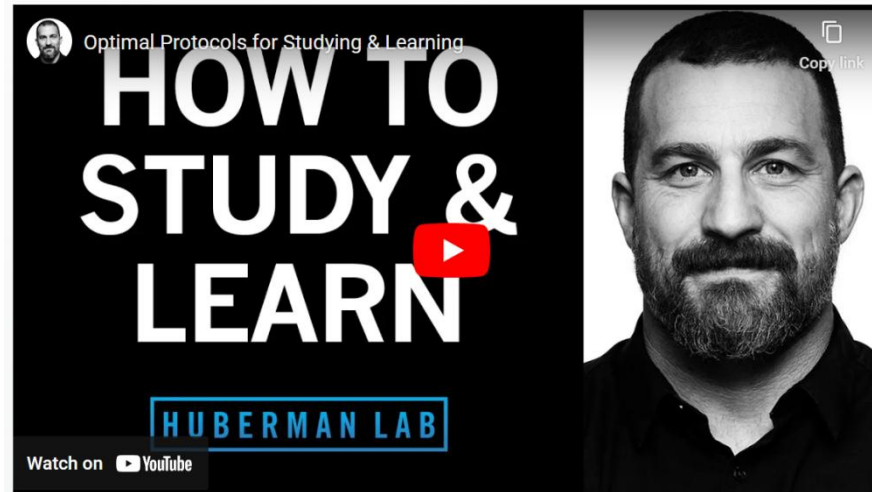


Mr Towill

Effective study habits

Optimal Protocols for Studying & Learning

Learning & Memory



Effective Revision

Effective revision is **crucial to students' chances of success** in their GCSE exams. It is **important that they all revise extensively** and effectively to ensure that they are fully prepared for their exams throughout Year 11.

Dos	Don'ts
Work in a silent space.	Simply write out notes or copy from a textbook/exercise book.
Leave your mobile phone in a different room.	Cram revision in the 'final minutes' – this overloads your working memory and can cause stress and anxiety.
Turn off all distractions including the TV and music – if you need music, ensure it is instrumental .	Re-read notes and do nothing with the information.
Revise with a family member rather than friends.	Highlight information for the sake of it.
Revise in smaller chunks – 25 minutes at a time and then take a five-minute break.	Work in a loud/busy space – attempting to revise while multi-tasking and doing other things isn't effective.
Space out your revision.	Only focus on comfort zone revision – you need to revise the hard stuff!

Effective study habits

Eliminate distractions



Revision Environment

Find a quiet, tidy room with minimal distractions – your bedroom, library or classroom.

Put your revision timetable, exam timetable and other documents visible on your wall

Make sure you have a drink and snack with you, staying hydrated and full is important



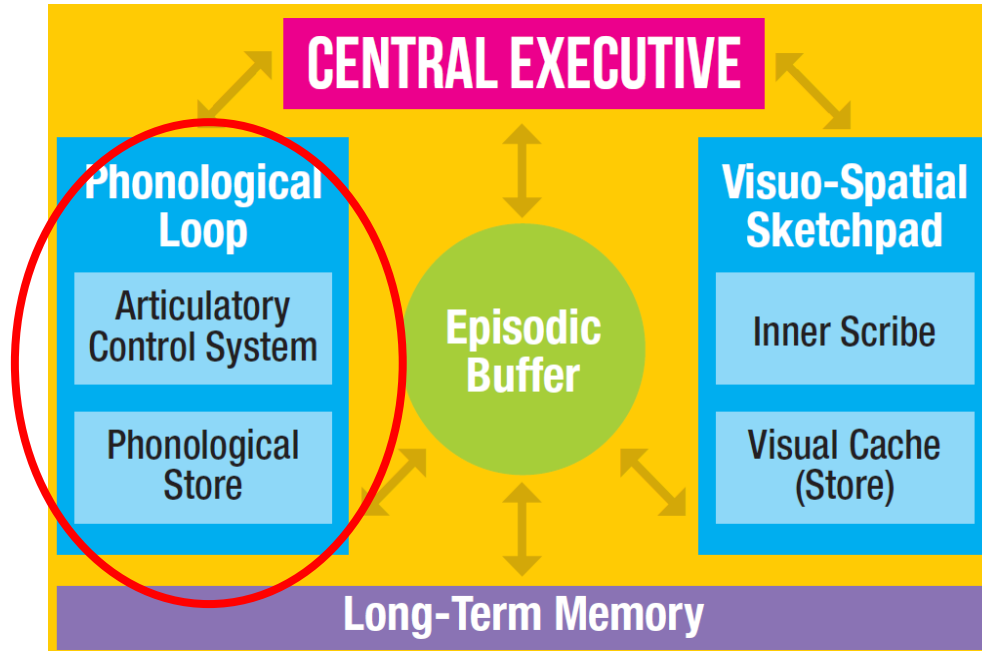
Put your phone in another room, it is too much of a distraction -

Loud music is a distraction, if you must listen, it needs to be low tempo, without lyrics

Have all your revision materials and stationary on your desk ready to go - make it obvious

The Psychology of Memory

KEY TAKEAWAY: When revising **do this in silence** and **without distraction**. DO NOT be tempted to listen to music whilst revising.



Effective study habits



Regular study slots



Week commencing: _____

My Weekly Revision Timetable

	MONDAY	TUESDAY	WEDNESDAY	THURSDAY	FRIDAY	SATURDAY	SUNDAY
8:00 am							
9:00 am							
10:00 am							
11:00 am							
12:00 am							
1:00 pm							
2:00 pm							
3:00 pm							
4:00 pm							
5:00 pm							
6:00 pm							
7:00 pm							
8:00 pm							

Why do we forget?

KEY TAKEAWAY: Consider your **revision timetable** carefully. **Work smarter, reduce your cognitive load.**



Week commencing: _____

My Weekly Revision Timetable

	MONDAY	TUESDAY	WEDNESDAY	THURSDAY	FRIDAY	SATURDAY	SUNDAY
8:00 am							
9:00 am							
10:00 am							
11:00 am							
12:00 am							
1:00 pm							
2:00 pm							
3:00 pm							
4:00 pm	History						
5:00 pm	English					✓	
6:00 pm	Literature						
7:00 pm							
8:00 pm							

Tip 1: Stay positive - if you work hard and practise effectively, you will succeed!

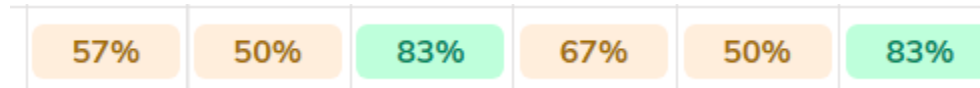
Tip 2: Test yourself, don't just read. Use practice questions and mark them or re-write notes from memory.

Tip 3: Be disciplined - stick to your plan! You can change/move it, but make sure you stick to it!



Effective study habits

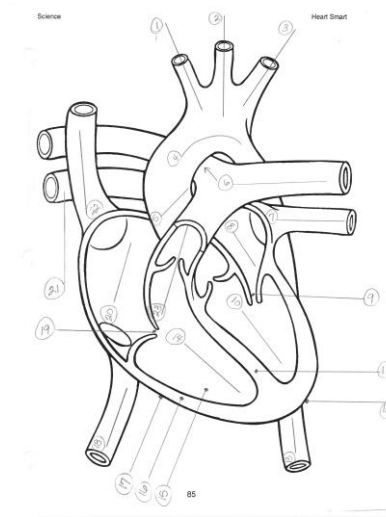
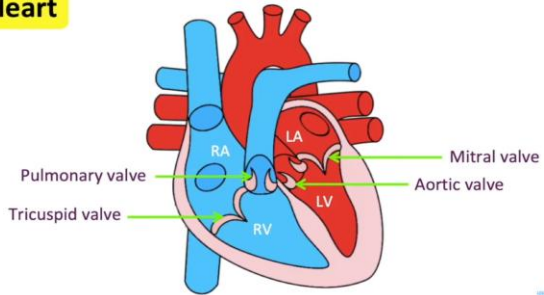
Study the material you don't know



Effective study habits

'Watch one, do one, teach one'

Heart



Effective study habits



2. **Distributed practice: implementing a schedule of practice that spreads out study activities over time.**

Students will retain knowledge and skills for a longer period of time when they distribute their practice than when they mass it,¹¹ even if they use the same amount of time massing and distributing their practice.* Unfortunately, however, many students believe that massed practice is better than distributed practice.¹²

Post 16 Options

How to support your children in their next steps

What are their Options?

- Raising of the Participation Age
So, what does this mean for them?
 - stay in full-time education - for example at school, Sixth Form college, further education college or University Technical College (UTC)
 - start an apprenticeship or traineeship
 - small number of other options depending on circumstances
 - **grades will determine whether some options are available.**



I CAN MOVE ONTO LEVEL ... AND CONSIDER THESE OPTIONS ...

GCSE grades 4+ are Level 2 qualifications

GCSE grades 1, 2 or 3 are Level 1 qualifications

3

A LEVELS

3

T LEVELS

3 2 1

VOCATIONAL COURSES

3 2

APPRENTICESHIPS

What's Next? (Post-16 to Post-18)

When to apply?

- Open evenings start October.
- Colleges open applications from September/October.
- Sixth Forms from November.
- Apprenticeships advertised anytime but the main window is January to May.



A LEVELS

- Most students take three subjects (but some can do more).
- Exams after two years.
- Minimum grades needed.
- Choose a range of subjects

3 or
more
subjects



Success for life

Apprenticeships

- Increasing in areas like IT, business, hospitality, dental nursing and social care. Good in engineering, vehicle maintenance, hairdressing and childcare.
- Not many in traditional trades like construction.
- **Competitive** – apply like a normal job.
- Grade 4 or higher in English and Maths usually required.
- Paid time off for study and holiday.
- Qualification is linked to an apprenticeship 'standard' which sets pre-requisites like grades (see IfATE website).



Qualifications

English and Maths

Apprentices without level 2 English and maths will need to achieve this level prior to taking the End-Point Assessment. For those with an education, health and care plan or a legacy statement, the apprenticeship's English and maths minimum requirement is Entry Level 3. A British Sign Language (BSL) qualification is an alternative to the English qualification for those whose primary language is BSL.

T Levels

One
technical
subject



- New technical qualification ie gives you the skills you need for going into the industry.
- Can lead to apprenticeships or university too.
- One 'subject' but equivalent to three A Levels.
- Work placement is 20% of your qualification.
- Entry requirements - usually grades 4 or 5.
- Foundation year option.



Success for life

Vocational courses

- Specialist qualifications, for example BTECs also known as Applied qualifications.
- Combine practical learning with subject specific and theory content.
- The GCSE grades needed will depend on the entry level of the course
- Insight into an industry and a vocational alternative to A Levels.
- Progress to a higher level - such as an apprenticeship or higher level course.



Extended Certificate or Diploma?



Extended Certificate

- AKA Applied A-level.
- Equivalent to one A-level but usually 50/50 coursework and exam
- Combine with A-levels
- Graded merit, distinction etc.
- Usually offered by school sixth forms, and some colleges.

Extended Diploma.

- Vocational course that is full-time for one or two years, depending on the level of the course.
- You ONLY take this one subject.
- Usually offered only at colleges.



Success for life

What do we do to assist your child?



All students:

- have had an options briefing and received a copy of the Post-16 booklet.
- will have a 1:1 careers advice appointment.
- have had access to Colleges and other providers who have visited to introduce their offer.
- are aware of the Sixth Form Open Evening.
- have access to insight days, open events on Futures Bulletin (link in weekly bulletin).
- have been made aware of the information on Careers section of website.
- have access to the Unifrog career platform.
- have help with a back-up plan.



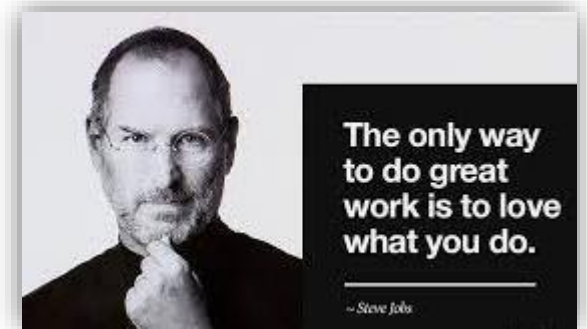
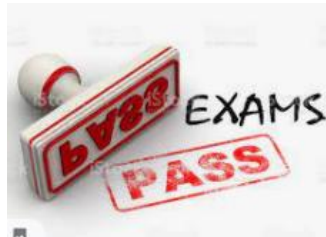
The guidance session

- Appointments on request, AFTER they have done some research/attended Open Evenings.
- Discussion is confidential unless safeguarding is a concern.
- Advice is impartial.
- Action Plan – it is up to students to take this forward.



What else do you need to know?

- Grade 4 or higher in English and Maths can make a big difference to the number of options students have.
- Do help them RESEARCH options and VISIT colleges and Sixth Forms.
- Students can apply for a number of different courses and at different providers.
- Students only need to confirm which option they choose, on results day.
- There is an option for everyone!



What else do they need to think about?



- All courses are going to be more challenging at the next level.
- Choose something they enjoy and are good at. It does not define their entire future!
- Please think about things like transport, costs, part-time jobs, driving lessons.
- No idea? What do they NOT want to do? We can work from there...



I cannot stress highly enough...



Any Questions?