



DENEFIELD PROSPECTUS



- 1. Our Vision**
- 2. Curriculum and Learning**
- 3. Our Facilities**
- 4. Extra-curricular Activities**
- 5. Student and Parent Support**
- 6. The Sixth Form**
- 7. Destinations and Careers**
- 8. Uniform Requirements**
- 9. Admission Arrangements**

Denefield's Vision

Success for life for each and every young person

Welcome to Denefield. Located in the western fringes of Reading and overlooking the beautiful Thames Valley, our exciting and stimulating school aims to ensure that all young people develop the knowledge and values to thrive in modern life.

We call this '**Success for life**' - where students use their hard work and **CHARACTER** values to achieve academic success; develop economic independence; forge positive relationships; support their local environment and community; and look after their own physical and mental health.

At Denefield we focus specifically on nine CHARACTER values. Three of these link to personal attributes - Confidence, Happiness and Articulacy. Three focus on perseverance - Resilience, Ambition and Courage. And the final three ensure Denefield students support and contribute to others - Tolerance, Empathy and Respect. In our view, students gaining excellent qualifications and CHARACTER traits mean they are likely to be extremely successful in life.



This is an inclusive and caring school which is ambitious for its pupils. There are high expectations of what pupils can achieve. Pupils study a rich range of subjects in all key stages.

Ofsted 2023



Success for life

Curriculum and learning at Denefield



Denefield's curriculum and lessons are designed to ensure that each and every student reaches their potential and becomes the best version of themselves.

We believe in stretching, challenging, and supporting all students, including the most able and those with specific needs. Our lessons are ambitious, knowledge-rich and engaging, with homework used to reinforce past learning and prepare for future lessons. We have a dedicated homework club based in the Edison area, which offers a quiet and supportive space in which to complete work.

All students pursue a rich and varied curriculum. At Key Stage 3 (Years 7-9), students take:

- the core subjects of English, Maths and Science
- the three humanities subjects of Geography, History and Religious Studies
- a choice of French, German and Spanish in year 7, with the opportunity to take a second language in years 8 and 9
- a variety of creative and practical subjects - Art, Design and Technology, Food Technology, Music and Drama.
- Physical Education

- Denefield's version of personal, social, health and citizenship education, which we call Success for Life.

Students choose their option subjects in the spring of Year 9. Alongside the compulsory subjects of English Language and English Literature, Maths, Science, PE and Success for Life, students choose a number of other subjects from a range of academic, practical, creative, and vocational options. Students also either take separate Biology, Chemistry and Physics GCSEs, or combined Science GCSE, which leads to two qualifications across the three science subjects. As a result, most Denefield students gain either nine or ten GCSE qualifications. Some of our most able students will have the opportunity to embark on an optional enrichment qualification. Once they have achieved their GCSE qualifications, students remain at Denefield to take A Level or other Level 3 subjects, begin an apprenticeship, or go to college to study vocational courses.



The school has clear expectations for classroom routines. These underpin positive and calm lessons and positive relationships in lessons.

Ofsted 2023

Denefield's Facilities



Denefield's facilities are second to none.

We have seven faculties – English and Film; Maths, ICT and Computing; Science and Social Science; Languages, Business and Travel, Humanities, Creative and Performing Arts, and PE and Health – and each faculty has its own well-equipped suite of rooms. In recent the years the school has benefited from nine new science laboratories, two new food technology rooms, three music classrooms, first class art and technology workshops and studio space, a performance and assembly area, and an extended canteen. In 2025 the school invested nearly £1m to install air conditioning in 25 classrooms, powered by solar power. The school benefits from a spacious and inspirational library, as well as extensive landscaped grounds with multiple grass pitches and hard courts. Our new floodlit 3G pitch brings exceptional sporting facilities to the school and local community.



Denefield's Facilities



We have extremely high expectations of student conduct and self-discipline. We expect our students to arrive on time every day, work hard in all lessons, and complete their homework to the best of their ability. To this end, students are taught and supported by highly qualified and dedicated staff.

At Denefield, academic excellence and personal development go hand in hand. Our students arrive at Denefield as children aged 11 and leave as young adults aged 16 or 18. The school works alongside parents/carers to help students navigate the journey through adolescence and into adulthood. Each student is placed in a tutor group of approximately 25-30 students from Years 7-11, and into one of four houses – Kentwood, Langley, Norcot or Sulham. We believe that this 'vertical' tutoring helps break down social and cultural barriers, creates a supportive atmosphere in the tutor room, and allows learning conversations to take place, both between tutor and student, and student to student. It also helps to prepare students for real-life situations: in social situations and the workplace we mix with people of different ages.

At Denefield, the role of the tutor is extremely important, and we celebrate the positive relationships that exist between our students and tutors. Tutors play a vital role in monitoring the progress of students: supporting them to tackle new challenges, having oversight of homework and setting clear and achievable targets.



We have complete confidence that our child is in a secure school environment and will thrive with your guidance and we are confident in our child's wellbeing and success under your team's care.

Year 10 Parent/Carer

I have nothing but praise for Denefield and I am so pleased as a family we decided to send her to you and that we were able to get in as it wasn't our catchment school. Our daughter seems to be thriving at Denefield and gets involved in lots outside of school hours too.

Year 8 Parent/Carer

Extra-curricular activities and CHARACTER development at Denefield



We believe that clubs, activities, trips, and visits are fundamental to students developing their CHARACTER values and achieving success for life.

Denefield runs a full and varied programme, including:

- sports clubs and teams, including girls' and boys' football, rugby, cricket and netball – these opportunities are significantly enhanced by the new floodlit 3G pitch
- a wide range of clubs and performances, including the annual production
- Duke of Edinburgh Award opportunity for all students from Year 9 onwards
- participation in the Combined Cadet Force, run jointly with Pangbourne College, for all students from Year 9 onwards
- construction of electric racing cars and competition in regional and national Greenpower competitions
- wide range of local trips and visits, including visits to Windsor to study castle development, Geography field visits, and trips to London to visit art galleries and sites of architectural interest



- international trips including the biannual Sports Tour, most recently to Holland, ski trip, the History visit to Ypres, trips and exchanges organised by the Languages, Business and Travel Faculty to Cologne, Normandy and Seville, and Art trips to Venice, Florence and Rome.
- annual Race for Life event, participated in by all students, to raise awareness and funds for Cancer Research UK.



A heartfelt thank you to you and all the staff for the trip to Holland. I can honestly say our daughter has had the best week and has come back so happy.

Year 9 Parent/Carer

Pupils' wider personal development is very important to the school. The school runs a wide range of trips in this country and abroad. There is also an extensive and very popular extra-curricular programme.

Ofsted 2023

Transition from primary school to Denefield

We work hard with our primary partners to ensure our new Year 7 students are confident and ready to learn when they arrive at Denefield. We do this through:

- events at Denefield for Year 5 and 6 students
- after-school Kids' College for Year 5 and 6 students
- our Transition Co-ordinator visits all of our catchments primary schools to meet Year 6 students coming to Denefield and their teachers
- transition days in July for Year 6
- Dedicated Year 7 induction days in September



Access and Inclusion

Denefield works closely with West Berkshire Local Authority to ensure appropriate provision for disabled students and those with sensory impairments. Denefield values all of its students and provides extra support where appropriate. Teaching staff are closely aware of students' needs, including those with SEND, and employ a full range of teaching styles to ensure no student is excluded from learning. Inclusion and intervention staff work closely with parents/carers, external agencies, and other relevant stakeholders, to provide a personalized learning experience which is appropriate for each student.



Most able students at Denefield

Many Denefield students are exceptionally able and the school supports and stretches these students in a number of ways.

Expectations and aspirations are high. Teachers are aware of students' abilities and push them to produce exceptional work and achieve the highest grades. The most able students take three separate sciences at GCSE and may participate in additional GCSEs qualification run after school. Following their A-levels many Denefield students gain places on the most prestigious degree courses such as Law and Medicine and study at the most competitive universities such Russell Group universities and Oxbridge.

Partnership between parents/carers and the school is crucial to the success of Denefield students.

We provide information on what students will study through our website and regular curriculum information evenings. We provide feedback on students' progress through regular reports and annual parent- teacher consultations. We survey parents/carers (as well as students) each November and hold a Headteacher's Open House event three times a year to give parents/carers a further opportunity to influence the direction of the school. We encourage parents/carers to contact the school if they have any concerns or questions.

The Denefield Sixth Form



A high proportion of students choose to remain at Denefield at the end of compulsory schooling and progress into Years 12 and 13.

They have the opportunity to pursue advanced studies in a wide range of academic and vocational courses and benefit from a high-quality learning environment. Denefield offers over 25 courses in the Sixth Form, from traditional academic A Levels such as English Literature, History, Biology, Chemistry or Physics, to practical A Levels and vocational qualifications including Art, Photography, Psychology, Business, Health and Social Care and Sports Science.

Our aim of encouraging student responsibility within a framework of care, guidance, support, and challenge continues in our approach to the Sixth Form. Small classes led by experienced, specialist teachers and access to first-rate private study facilities are combined with close monitoring of progress by tutors to ensure that individual achievements are of the highest standards.

Sixth Form students are expected to play a leading role in the life of the school through service and leadership within the house structure. There are many ways in which a student can contribute. This may be as part of the Sixth Form Leadership Team, as a House Captain, or as a mentor to younger students in their house during tutor time. It may also involve leading charity events, helping to run extra-curricular clubs or supporting younger students through paired reading.

All Sixth Form students take part in a wide-ranging programme of community service: some support teachers in lessons at Denefield, others work at local primary schools or our partner special school or involve themselves in community groups and projects. These opportunities provide valuable experience which can enhance a student's CV or university application, broaden ambitions, and help increase confidence and the skills of leadership and organisation.



Thank you both for the guidance and advice you gave to our son when he was researching apprenticeships and then preparing for interviews and the assessment centre. We are thrilled that our son has secured the degree apprenticeship at AWE and are very proud of his achievement. He can't wait to get started!

Year 13 Parent/Carer

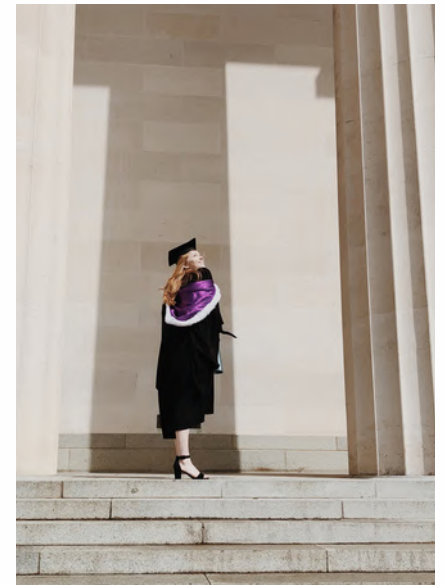
Destinations and careers



Part of achieving Success for Life is ensuring that students have positive destinations and careers to progress to once they leave Denefield.

At Denefield students have high aspirations when choosing their post-18 destination. Each year many students leave us for a place at a top university. Recently Denefield students have taken up places at Oxford University to read German, Law, Psychology, Natural Sciences and History. In 2025 three Denefield students took up places at Russell Group universities to study Medicine. A large number of students secure places on highly sought after apprenticeships and degree apprenticeships, including at major firms like Hewlett Packard, Mercedes Benz, AWE, Crowe and Bayer.

This success, when students leave us in the sixth form, is the culmination of a rigorous careers programme from Year 7. From Year 7 students are introduced to Unifrog, a leading careers platform, to explore options for their future. The Success for Life curriculum incorporates CV workshops and interview skills to ensure students have the soft skills to succeed. There is careers guidance from our independent careers lead when students make their GCSE options choices in Year 9, all the way through to Year 13 when students are making their post-18 choices.



A big thank you for last night's post-16 meeting. It was really informative. It's such a big step for the children and as a parent going through this for the first time, I feel much more informed to help our daughter with her choices.

Year 11 Parent/Carer

Uniform Requirements



Denefield has its own distinctive uniform. There are good reasons for this. The most important is that our students come from a wide variety of backgrounds and uniform helps us create a sense of our school as a community

Uniform is an essential part of building our sense of pride and belonging at Denefield – and of maintaining our high expectations and standards. It is important that school uniform is worn correctly and with pride to maintain our excellent school culture. We are very clear about our school uniform expectations on our website.

- School shoes must be: plain (without decoration), black, firm-soled and polishable.
- School skirts are to be worn as purchased and not rolled up.
- School trousers should be plain black, cover the ankles and be suitable as business wear. Formal black shorts are also acceptable.
- School jumpers are to be worn as purchased and not pulled in at the back. Hoodies are not acceptable as a school coat.
- We also do not allow: false nails, acrylic nails, nail varnish (other than clear) or false eyelashes.
- Students may wear one discrete stud in each earlobe only. No facial piercings are acceptable.
- We expect all students to attend with hair that is a natural hair colour.

Please follow the links for further details around our school uniform.

[Denefield Uniform](#)



Admission Arrangements

Admissions 2025-2026

The following is a summary of the Trustees' policy for admissions. The [full version](#) can be found on the school's website.

Year 7 entry

The school uses the [West Berkshire Admissions Service](#) which will publicise the school to prospective parents in the same literature as for other West Berkshire schools.

The Denefield Trust Board is the admissions authority for the school. Since 2010, Local Authorities have been required to produce a scheme for co-ordinating admission arrangements for all maintained schools in their area and to exchange information on applications with their neighbours. Admissions to Denefield in Year 7 are administered by West Berkshire according to the co-ordinated scheme. All applications are considered on an equal preference basis against the over-subscription criteria for each of up to three preferred schools, NOT considered on the basis of first preference before other preferences. The admissions timetable is detailed overleaf.

If applications from students with Education, Health and Care Plans (EHCP), which specifically name Denefield, are received prior to the closing date for the receipt of admissions, then offers will be made to



such applicants in preference to normal admission categories.

These offers will be taken into account in the calculation of the number of places available for other applicants. Where the school is oversubscribed, after the admission of students with an EHCP naming the school, places are allocated according to over-subscription criteria as outlined below:

A. Looked After Children and all previously looked after children

Previously looked after children are children who were looked after, but ceased to be so because they were adopted or became subject to a child arrangements order or special guardianship order. Also, children who were previously in state care outside of England, and have ceased to be in state care as a result of being adopted. Please see the policy for the extended definition.

B. Catchment area students

These are children whose permanent home address is in the school's designated catchment. Where necessary, priority will be given to siblings in catchment. The home address is taken to be the address at the closing date for applications in the normal admissions round.

Where parental responsibilities are equally shared, the home address will normally be considered to be with the parent with whom the child spends the majority of time and nights Monday to Friday; this will normally be expected to be with the parent/carer that receives the student's child benefit, where this benefit is still available. Where there is any doubt about the split of the

residence then the relevant address used will be that at which the school and Local Authority are satisfied that the child spends the majority of the school week.

Criteria C to E apply to children whose permanent home address is not within the school's catchment area. Priority is not given to children attending local primary partnership schools.

C. Siblings

These are students with a brother or sister including step-foster sibling and children of the parents/carers partner living in the same family unit. Children living at the same address in a family unit are therefore deemed to be siblings even if there is no actual relationship between them. Children who are siblings but living at different addresses to each other will not be treated as sibling for the admissions criteria. A sibling is considered to be one who is already on the roll of Denefield School, and in relation to admissions at Denefield School's first point of entry, will continue to attend compulsory education at school during the following academic year.



D. The children of a member of staff who has been employed at Denefield for a minimum of two years, or who has been recruited to fill a vacant post for which there is a demonstrable skills shortage.

E. All other applicants

Tie breaker

Priority will be given within any of the above over-subscription criteria to the applicant whose permanent home address is nearest to Denefield. Distances will be measured using the West Berkshire Admissions Geographical Information System taking a straight line between the home address and the school using the unique property identification points within the National Land and Property Gazetteer (NLPG).⁴

Admission appeals

Any parent not offered a school place at their preferred school has the right of appeal to an independent appeals panel. This can be for a place at one or more of their preferred schools and against an alternative school place that has been allocated by West Berkshire Council. Information on how to appeal will be provided with the result of the application. Appeals must be lodged by the dates set out in the co-ordinated and in-year scheme for the normal admissions round, or within 21 days from the date of the offer or refusal letter.

Admissions timetable 2025/2026

01 September 2025	Applications open online
31 October 2025	Closing date for applications
02 March 2026	Offers and refusals made to parents/carers by West Berkshire Council on behalf of the Denefield Trust Board
15 March 2026 15 March 2026	Closing date for parents/carers to accept offer (Reading Borough Council) Closing date for parents/carers to accept offer (West Berkshire Council)
30 March 2026 31 March 2026	Closing date for appeals (Reading Borough Council) Closing date for appeals (West Berkshire Council)

School Examination Data 2024-2025

Denefield is delighted to share its examination results at Key Stage 4 and Key Stage 5, which compare favorably with local and national examination results.

Key Stage 4

Measure	Denefield 2025	Notes
Progress 8 score (unvalidated)	Denefield 0.25 National average 0	This compares the GCSE results of Denefield students with similar students nationally – i.e. those who gained similar Key Stage 2 SATs results. This shows that Denefield students gained on average nearly a quarter of a grade higher in every GCSE subject than students at an average, and comfortably puts Denefield in the top 40% of schools nationally.
Attainment 8 score	Denefield 47 National average 46	This means that the average Denefield GCSE grade was 5.
% of students achieving a grade 4 or above in GCSE English and Maths	Denefield 70% National average 65%	A Grade 4 is a 'standard pass'.
% of students achieving a grade 5 or above in GCSE English and Maths	Denefield 50% National average 45%	A Grade 5 is a 'good pass'.
% of students entering the English Baccalaureate (EBacc)	Denefield 38% National average 39%	The English Baccalaureate consists of English, Maths, at least two Sciences, at least one Foreign Language, and at least one out of History and Geography.
% of students staying in education or employment after KS4	Denefield 96% 2022 * National average 95% 2022	* This figure is from school leavers in 2022 – the last time data was published.

Key Stage 5

Measure	Denefield 2025	Notes
Average Point Score per entry – A Level	Denefield 36	This means the average A Level grade was B-.
Average Point Score per entry – BTEC and vocational qualifications	Denefield 26	This means the average BTEC and vocational grade was Merit+.
% of students progressing to a sustained education, training or employment destination	Denefield 88% 2022* National average 85% 2022	* This figure is from 2022 – the last time data was published.



Get Directions Here: Denefield School

Denefield School, Long Lane, Tilehurst, Reading RG31 6XY

0118 941 3458 office@denefield.org.uk

www.denefield.org.uk